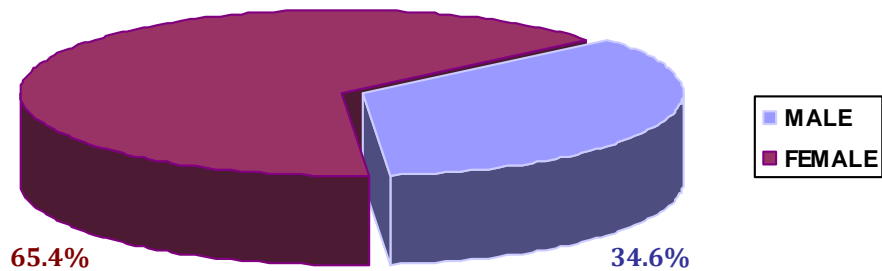
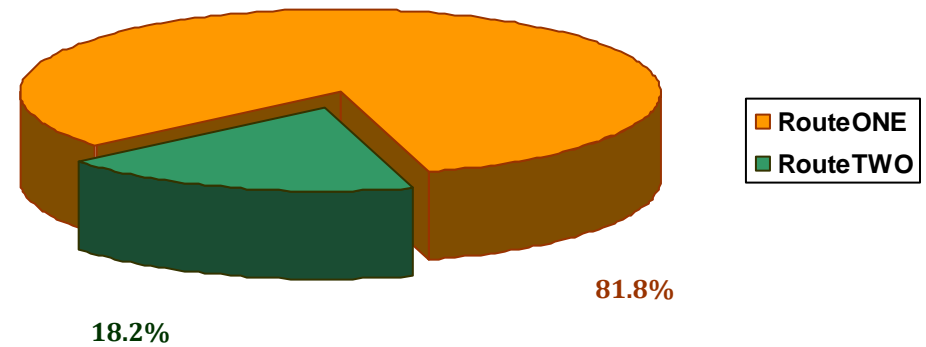




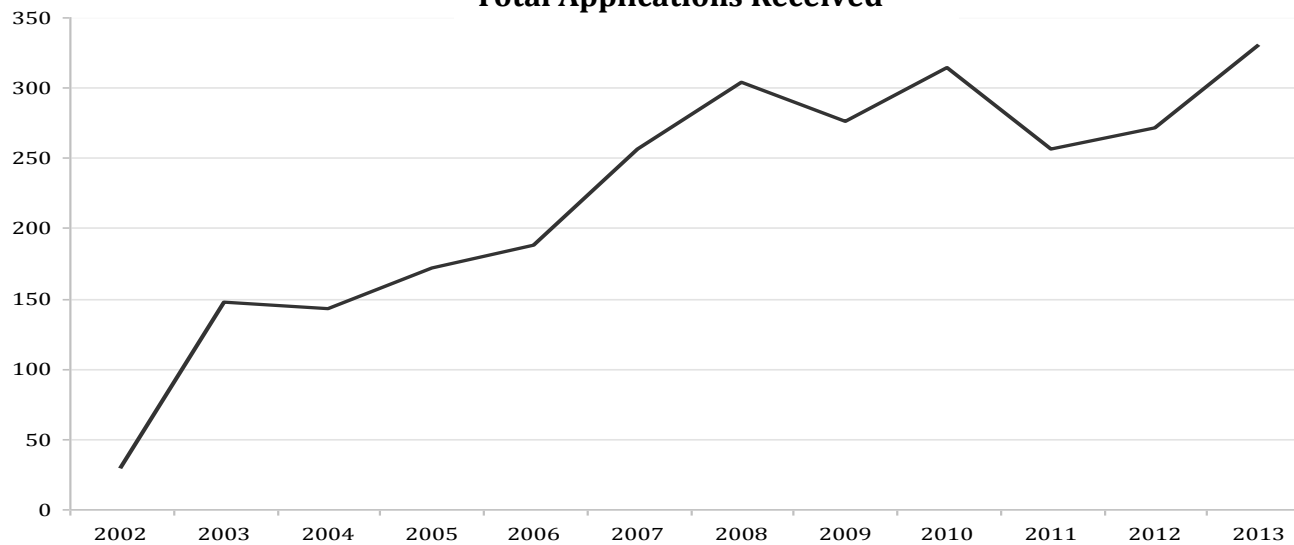
Gender



RouteONE / RouteTWO



Total Applications Received



Year	RouteONE	RouteTWO
2002	20	9
2003	122	25
2004	127	16
2005	139	33
2006	153	35
2007	207	49
2008	251	53
2009	236	40
2010	258	56
2011	194	62
2012	212	59
2013	277	53

## Applications Received by modality/sub-modality to March 2014

	<b>Audiology</b>	213
Cellular Science	<b>Ultrastructure &amp; Molecular Pathology</b>	5
Cellular Science	<b>Myology &amp; Immunohistochemistry</b>	0
	<b>Clinical Biochemistry</b>	405
Clinical Biochemistry	<b>Analytical Toxicology</b>	6
Clinical Biochemistry	<b>Paediatric Metabolic Biochemistry</b>	5
	<b>Clinical Embryology</b>	149
Clinical Genetics	<b>Cytogenetics</b>	248
Clinical Genetics	<b>Molecular Genetics</b>	236
	<b>Clinical Immunology</b>	67
	<b>Clinical Microbiology</b>	125
Clinical Physiology	<b>Neurophysiology</b>	5
Clinical Physiology	<b>Respiratory Physiology</b>	4
	<b>Haematology</b>	32
Haematology	<b>Blood Transfusion</b>	2
	<b>Histocompatibility &amp; Immunogenetics</b>	164
<b>Medical Physics &amp; Clinical Engineering *</b>		1041
	<b>Developing Sciences</b>	22

**TOTAL 2729**

\* Medical Physics & Clinical Engineering sub-modalities

<b>Clinical Engineering, Physiological Measurement &amp; Computing</b>	131
<b>Diagnostic Radiology &amp; Radiation Protection</b>	136
<b>Non-ionising Radiation Techniques</b>	54
<b>Nuclear Medicine</b>	173
<b>Radiotherapy</b>	479

<b>Dual sub-modality applications</b>	38
---------------------------------------	----

<b>Old sub-modalities</b> ( <i>n.b. sub-modalities redefined in July 2003</i> )	30
---	----

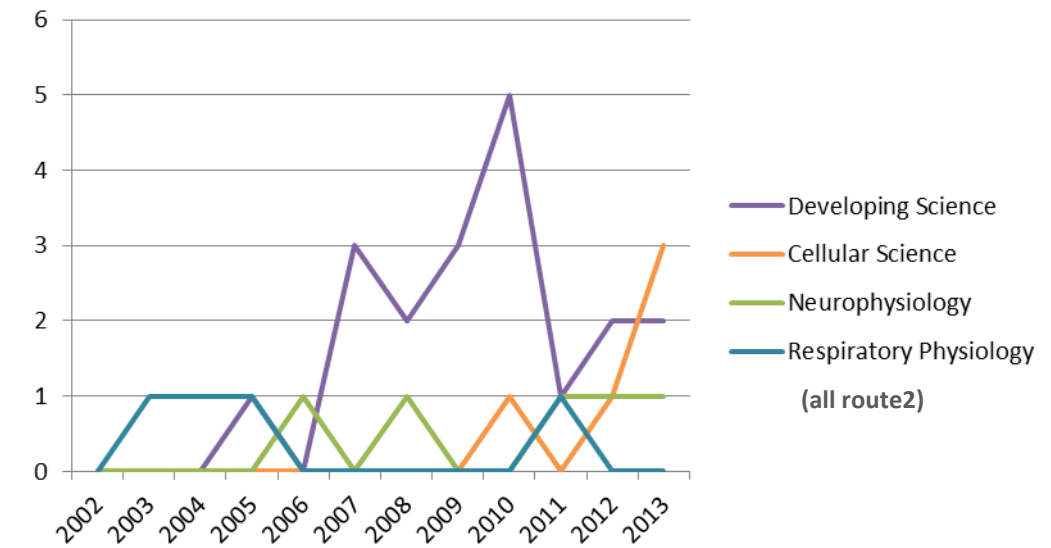
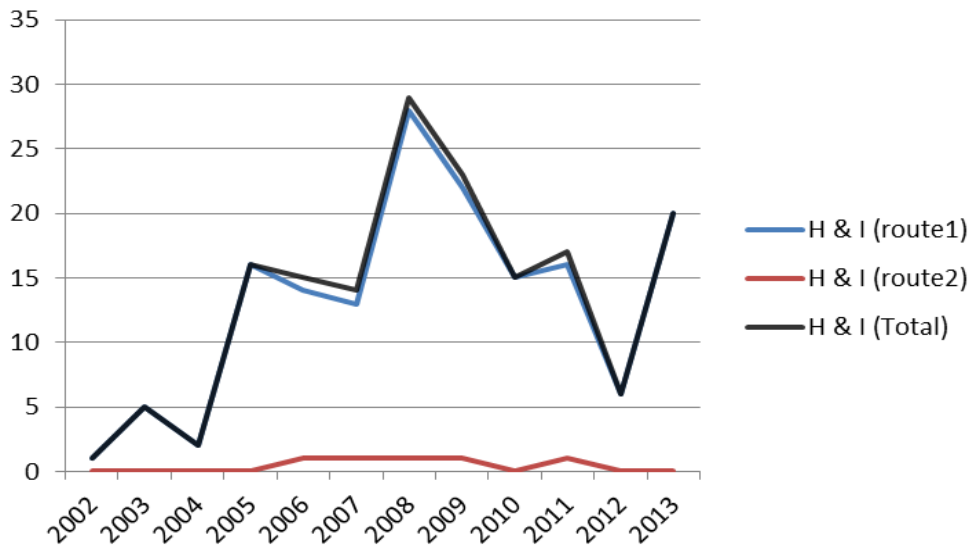
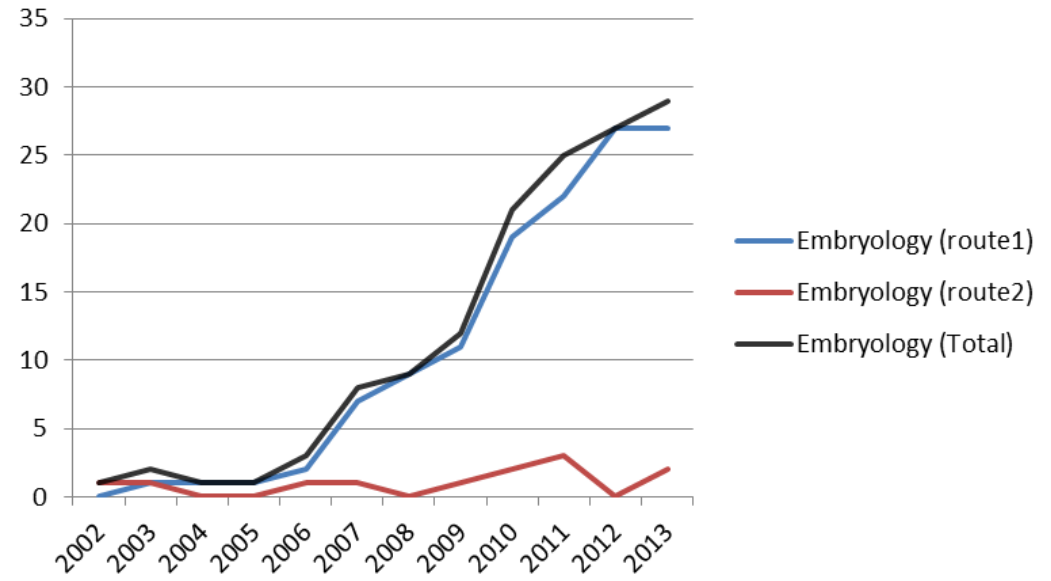
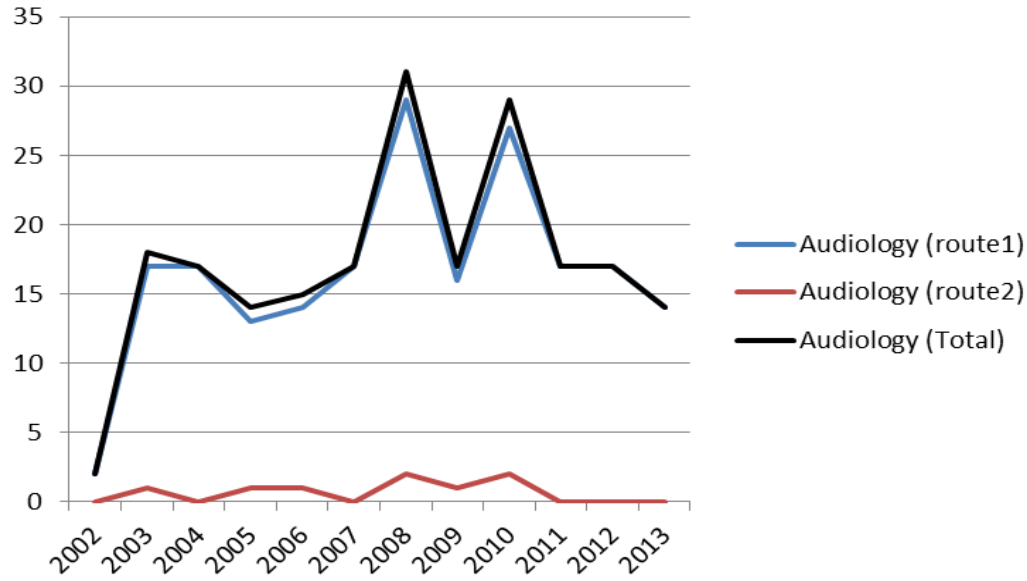
**TOTAL 1041**

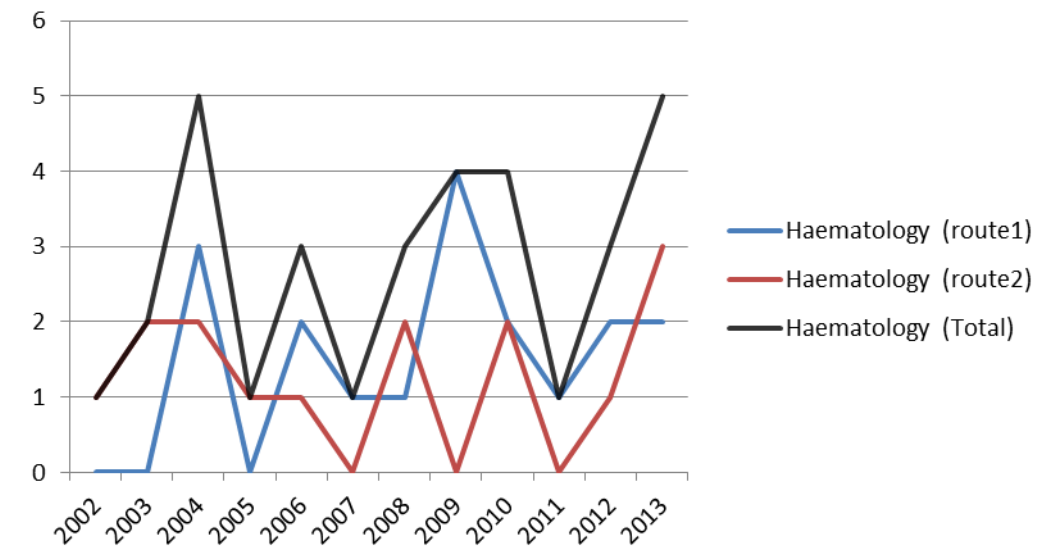
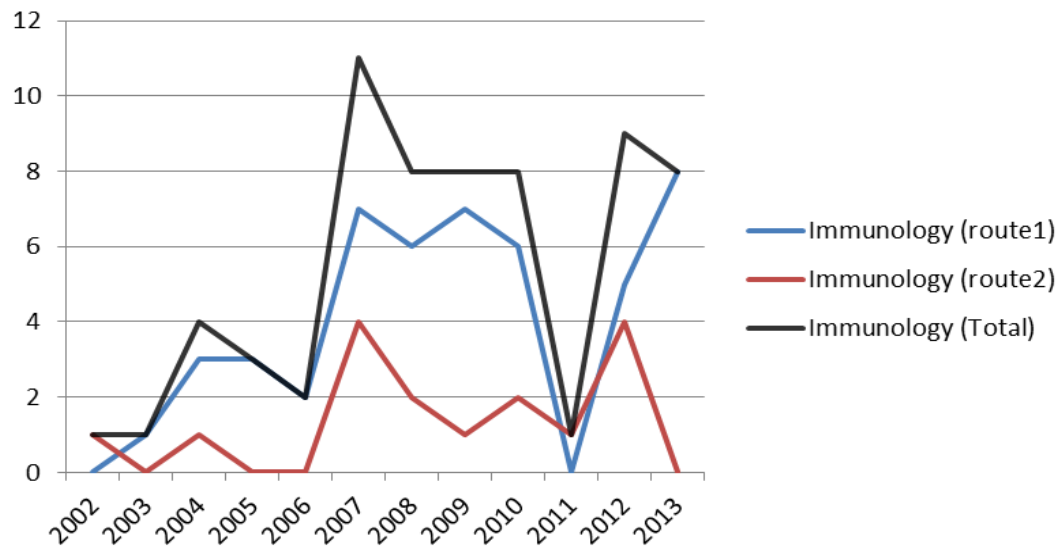
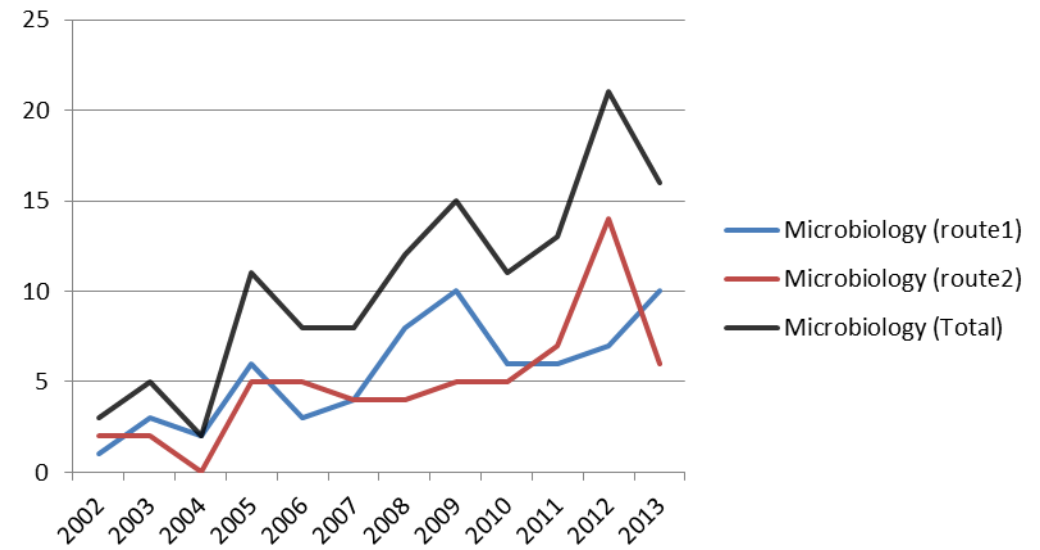
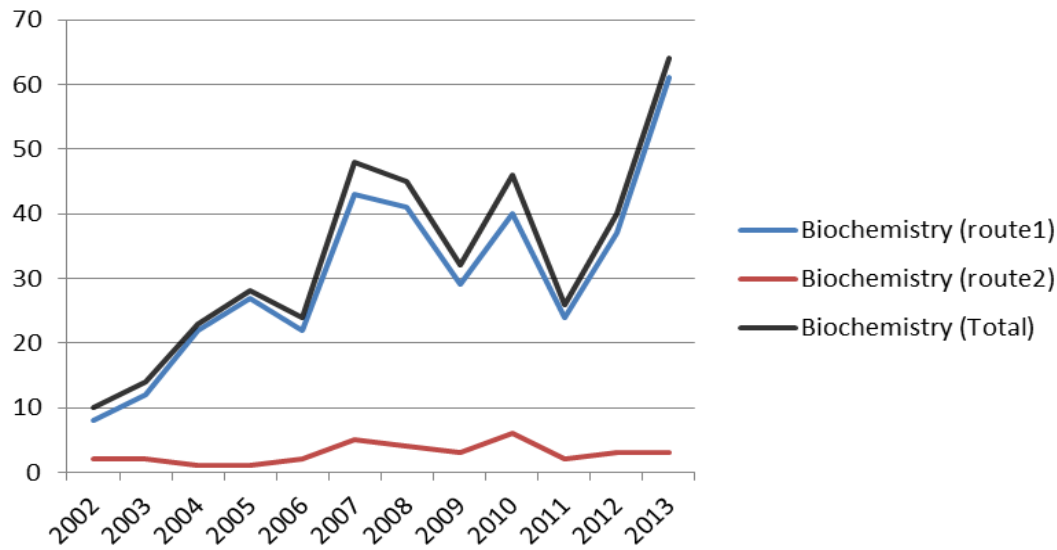
## Applications Received

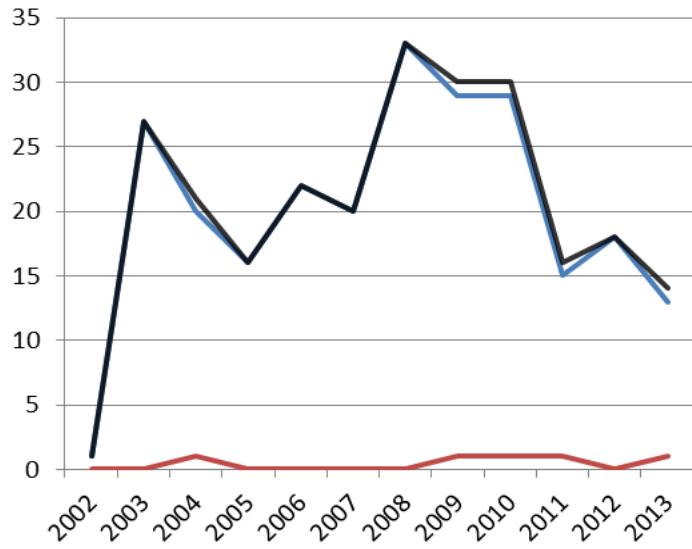
by modality/sub-modality and route of application per year (to year end 2013)

	2002		2003		2004		2005		2006		2007		2008		2009		2010		2011		2012		2013		TOTAL
	R1	R2	R1	R2	R1	R2	R1	R2	R1	R2	R1	R2	R1	R2	R1	R2	R1	R2	R1	R2	R1	R2	R1	R2	
<b>Audiology</b>	2	0	17	1	17	0	13	1	14	1	17	0	29	2	16	1	27	2	17	0	17	0	14	0	<b>208</b>
<b>Cellular Science</b>	-	0	-	0	-	0	-	0	-	0	-	0	-	0	-	0	-	1	-	0	-	1	-	3	<b>5</b>
<b>Clin Biochemistry</b>	8	2	12	2	22	1	27	1	22	2	43	5	41	5	29	3	43	6	26	2	37	3	61	3	<b>400</b>
<b>Clin Embryology</b>	0	1	1	1	1	0	1	0	2	1	7	1	9	0	11	1	19	2	22	3	27	0	27	2	<b>139</b>
<b>Cytogenetics</b>	1	0	27	0	20	1	16	0	22	0	20	0	33	0	29	1	29	1	15	1	18	0	13	1	<b>248</b>
<b>Molecular Genetics</b>	0	0	10	1	10	5	10	6	12	6	14	4	30	11	23	7	17	6	21	8	12	6	13	3	<b>235</b>
<b>Clin Immunology</b>	0	1	1	0	3	1	3	0	2	0	7	4	6	2	7	1	6	2	0	1	5	4	8	0	<b>64</b>
<b>Clin Microbiology</b>	1	2	3	2	2	0	6	5	3	5	4	4	8	4	10	5	6	5	6	7	7	14	10	6	<b>125</b>
<b>Neurophysiology</b>	-	0	-	0	-	0	-	0	-	1	-	0	-	1	-	0	-	0	-	1	-	1	-	1	<b>5</b>
<b>Resp Physiology</b>	-	0	-	1	-	1	-	1	-	0	-	0	-	0	-	0	-	0	-	1	-	0	-	0	<b>4</b>
<b>Haematology</b>	0	1	0	2	3	2	0	1	2	1	1	0	1	2	4	0	2	2	1	0	2	1	2	3	<b>33</b>
<b>H &amp; I</b>	1	0	5	0	2	0	16	0	14	1	13	1	28	1	22	1	15	0	16	1	6	0	20	0	<b>163</b>
<b>MedPhys&amp;ClinEng</b>	7	2	46	15	47	5	47	17	60	17	81	27	66	23	85	16	94	24	70	36	82	26	109	29	<b>1031</b>
<b>Developing Sci</b>	-	0	-	0	-	0	-	1	-	0	-	3	-	2	-	3	-	5	-	1	-	2	-	2	<b>19</b>
<b>TOTAL</b>	<b>20</b>	<b>9</b>	<b>122</b>	<b>25</b>	<b>127</b>	<b>16</b>	<b>139</b>	<b>33</b>	<b>153</b>	<b>35</b>	<b>207</b>	<b>49</b>	<b>251</b>	<b>53</b>	<b>236</b>	<b>40</b>	<b>258</b>	<b>56</b>	<b>194</b>	<b>62</b>	<b>213</b>	<b>58</b>	<b>277</b>	<b>53</b>	<b>2679</b>
	<b>29</b>		<b>147</b>		<b>143</b>		<b>172</b>		<b>188</b>		<b>256</b>		<b>304</b>		<b>276</b>		<b>314</b>		<b>256</b>		<b>271</b>		<b>330</b>		

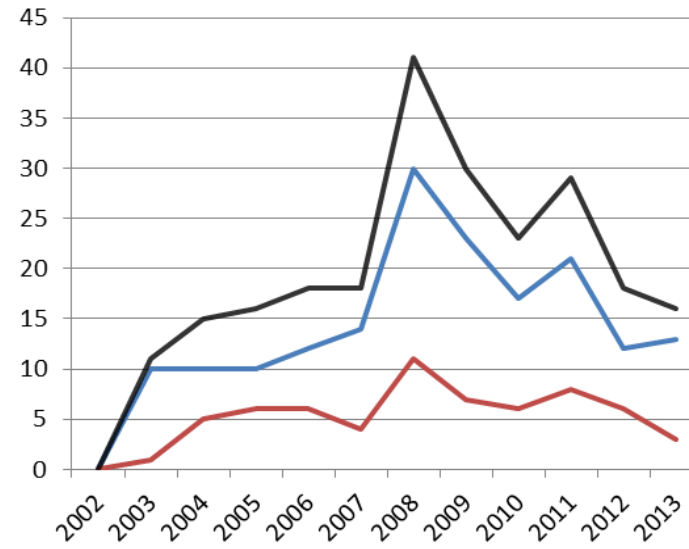
## Applications Received by modality/sub-modality and route of application per year cont.



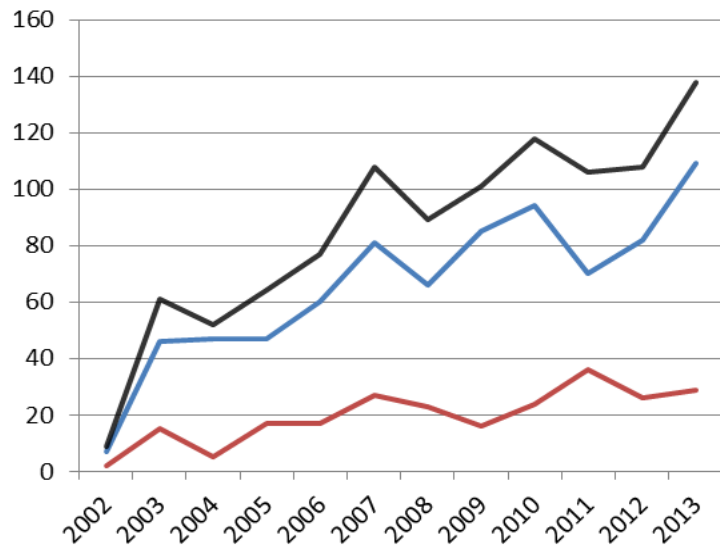




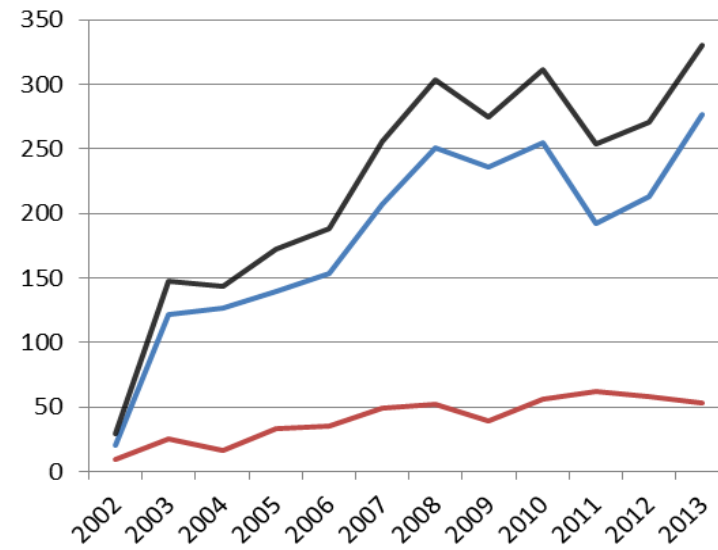
Cytogenetics (route1)  
 Cytogenetics (route2)  
 Cytogenetics (Total)



Molec Genetics (route1)  
 Molec Genetics (route2)  
 Molec Genetics (Total)



MedPhys&ClinEng (route1)  
 MedPhys&ClinEng (route2)  
 MedPhys&ClinEng (Total)



Total (route1)  
 Total (route2)  
 Total (all)